



TOYOTA

2023 4Runner

2023 4RUNNER

An off-road icon.

Grab your gear — it's going to be a wild ride. 4Runner has been championing the off-road for 40 years, with more to come. And with the introduction of 4Runner's 40th Anniversary Special Edition, this all-new SUV shows up ready to play. With the dependability of a veteran and the hustle of a rookie, the 2023 Toyota 4Runner is equipped to take your adventures up a notch.



40th Anniversary Special Edition shown in Ice Cap. Off-roading is inherently dangerous. Abusive use may result in bodily harm or vehicle damage.



TRD Pro shown in Ice Cap.



TRD Off-Road Premium shown in Barceloña Red Metallic.





SPECIAL EDITION

The legend continues.

For decades, 4Runners have earned the reputation of being an off-road icon, and we intend to keep it that way. To commemorate this milestone, we're proud to introduce the 2023 4Runner 40th Anniversary Special Edition. Limited to only 4,040 units, this SUV features unique details inside and out that celebrate how far we've come and welcome what's next.

The heritage-inspired edition features tri-color striped exterior graphics and bronze-colored accents, including its 17-in. wheels and detailed interior stitching. Feel a part of something truly special every time you look at the unique embossments and 1 of 4,040 interior emblem.

Rugged body-on-frame construction

With its legendary body-on-frame design, 4Runner 40th Anniversary Special Edition continues to provide the sturdy and reliable support you need when your adventures go beyond where the road ends.



Off-roading is inherently dangerous. Abusive use may result in bodily harm or vehicle damage.

40th Anniversary Special Edition shown in Ice Cap.

CAPABILITY

Conquer the off-road.

4Runner delivers a ride that's smooth in the city — but its true home is on the trail. Featuring standard Hill Start Assist Control (HAC)² and available off-road technologies like Multi-Terrain Monitor (MTM)³ and Multi-Terrain Select (MTS), this body-on-frame icon is built to take on the toughest terrain.



Multi-Terrain Monitor (MTM)

Get a next-level view of what's around you with 4Runner's available Multi-Terrain Monitor (MTM),³ which helps you navigate nature's obstacles with confidence.



Electronic Locking Rear Differential

To help you negotiate uncertain terrain, 4Runner's available electronically controlled locking rear differential distributes engine power evenly to both rear wheels, so they move at the same speed.



Crawl Control (CRAWL)

Available Crawl Control (CRAWL)⁴ automatically modulates the throttle and brakes on five low-speed settings so you can keep your focus on navigating across difficult terrain.



Kinetic Dynamic Suspension System (KDSS)

When taking on extreme off-road terrain, 4Runner's available Kinetic Dynamic Suspension System (KDSS) automatically decouples the sway bars as needed, helping improve wheel articulation.

Off-roading is inherently dangerous. Abusive use may result in bodily harm or vehicle damage. See numbered footnotes in Disclosures section.

PERFORMANCE

Designed for the long haul.

4Runner's rugged performance gives you the confidence to take on the world's terrain. And it's loaded with versatile features that come in handy when it's just you and the trail.



TRD Sport shown in Nautical Blue Metallic.

270-hp 4.0-liter V6 engine

4Runner's legendary reliability continues with power from its 4.0-liter V6 engine. With up to 270 hp and 278 lb.-ft. of torque, you have all that you need to take you from adventure to adventure.

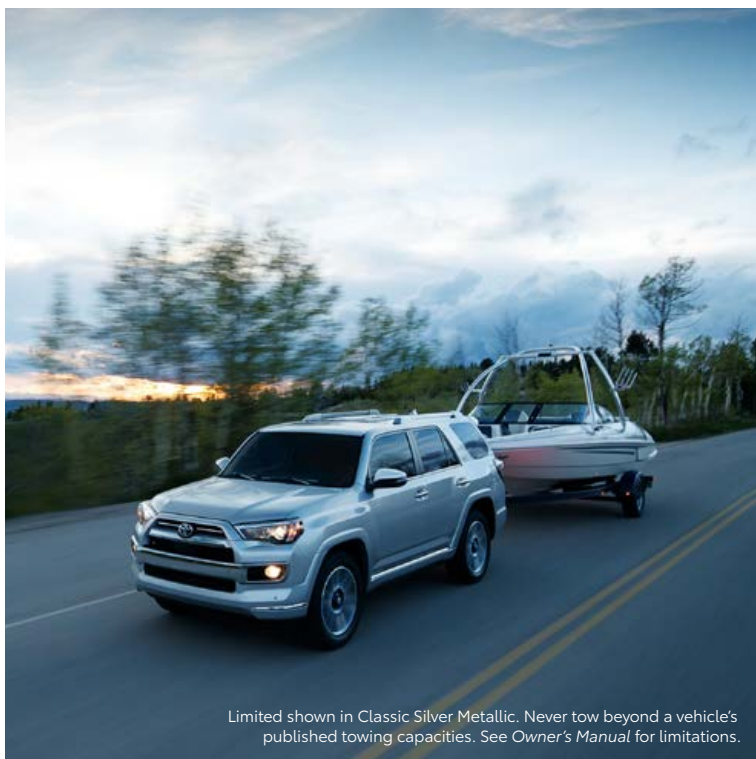


Full-time 4WD

Standard on 4Runner Limited, full-time 4WD helps provide you with optimal traction for every drive. By automatically sending power to the wheel that needs it most, all you have to do is focus on the path ahead when the terrain gets rugged or when the road conditions become challenging.

Part-time 4WD

Giving you more control of your 4Runner's capabilities is an available four-wheel-drive system that provides high and low range. Select High 2 (H2) for daily driving and the best fuel efficiency, High 4 (H4) for more traction under 55 mph, and Low 4 (L4) when you need to drive slowly or for trekking over difficult terrain.



Limited shown in Classic Silver Metallic. Never tow beyond a vehicle's published towing capacities. See Owner's Manual for limitations.

5000-lb. max towing capacity

With 4Runner's ability to tow up to 5000 lbs.,⁵ venturing into some of nature's toughest ranges doesn't mean you have to leave everything behind. 4Runner adheres to SAE J2807, the standard for tow ratings set by the Society of Automotive Engineers (SAE).

See numbered footnotes in Disclosures section.



TRD Pro shown in Ice Cap.



Nitto® Terra Grappler® all-terrain tires

4Runner TRD Pro's unique 17-in. alloy wheels come wrapped in Nitto®⁶ Terra Grappler®⁷ all-terrain tires for more on-road comfort and enhanced off-road traction.

TRD FAMILY

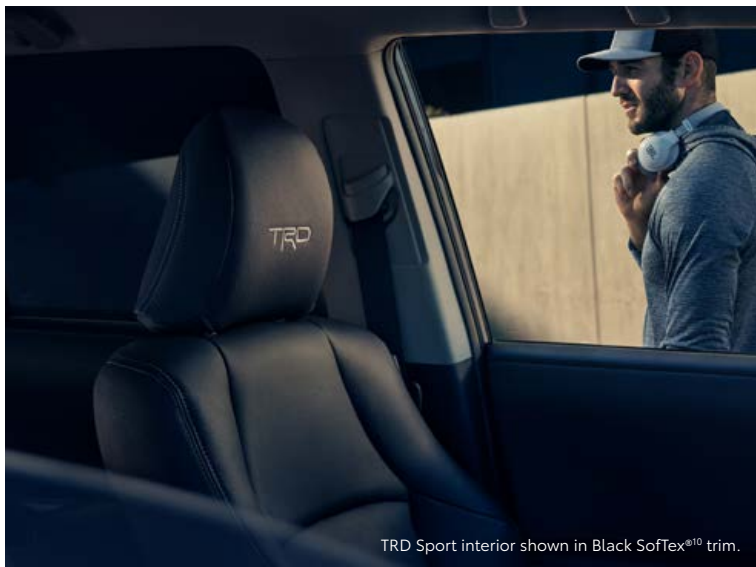
Tame wilder terrain.

Boasting unique TRD badging, the 4Runner TRD Family is ready to take your adventures to the next level. Looking its best with a fresh coat of mud, 4Runner TRD's trail-ready toughness and cutting-edge style have made this vehicle an off-road icon.



FOX® shocks and TRD-tuned suspension

Take your adventures to the next level. 4Runner TRD Pro's suspension features oversize TRD-tuned FOX®⁸ high-performance shocks — with remote reservoirs on the rear shocks — and TRD-tuned front springs to help carry you over unforgiving terrain.



TRD Sport interior shown in Black SoftTex®¹⁰ trim.



Rugged looks

When you're an off-road legend, there's no need to shout it. But that doesn't mean you can't show off. 4Runner turns heads on the trail with its signature hood scoop and black roof rails.

Off-roading is inherently dangerous. Abusive use may result in bodily harm or vehicle damage. See numbered footnotes in Disclosures section.

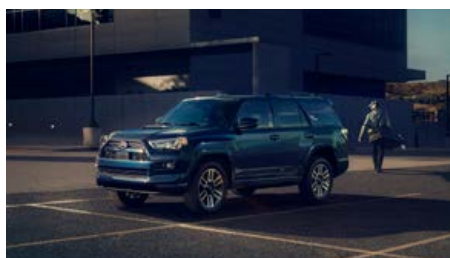
EXTERIOR

Turn heads on the trail.

At first glance, there's no doubt what this rugged SUV is capable of. From its aggressive front grille to its iconic badging, 4Runner's adventurous spirit is seen in every detail.



TRD Pro shown in Solar Octane (extra-cost color).



TRD Sport

4Runner TRD Sport scores style points with its commanding front grille, sporty hood scoop and color-keyed body details. One look at the TRD Sport badge and everyone knows this 4Runner is ready to get after it.



TRD Off-Road

Delivering consistent performance when the going gets rough, TRD Off-Road's Crawl Control (CRAWL)⁴ helps steady the course. And its Multi-Terrain Select (MTS) and part-time selectable 4WD help you take on rocks, dirt and mud — without losing your grip.



Limited grade

20-in. wheels, chrome body accents and a striking front fascia give 4Runner Limited a refined presence. Inside, it's all decked out with creature comforts, like leather-trimmed seats and a 15-speaker JBL^{®9} audio system. And staying true to its name, Limited is loaded with the proven capability features 4Runner is known for, like its standard X-REAS Sport Enhancement Suspension and available full-time 4WD.

See numbered footnotes in Disclosures section.



TRD Pro interior shown in Black SofTex^{®10} trim.

INTERIOR & UTILITY

Rugged, yet refined.

Inside, it's the perfect balance of resourceful and sophisticated. And when you're behind the wheel, 4Runner's 8-in. high-resolution touchscreen makes your playlist, navigation settings and more all look stunning.

TRD interior signature touches

Climb inside 4Runner TRD Sport and feel its elevated vibe. SofTex[®]-trimmed¹⁰ seats feature TRD embroidered headrests, while accent stitching found throughout the interior lets you know it's ready for action. All you have to do is grab hold of the TRD shift knob and drive off to your next adventure.

Power tilt/slide moonroof

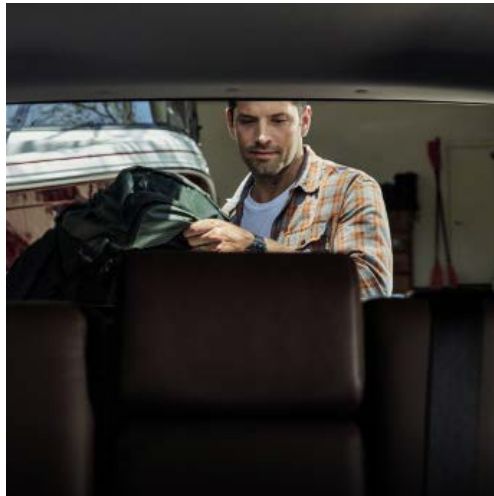
Take it all in. 4Runner's available power tilt/slide moonroof brings you closer to the great outdoors, without even leaving your seat.

Power rear glass

4Runner features a power rear window, a signature element found across all generations of 4Runner. And best of all, it's standard. This rear glass raises and lowers with the push of a button, making it easier to grab your gear from the cargo area.¹¹

Fold-flat second-row seating

With 4Runner's 40/20/40 fold-flat second-row seats, you can make room for everything you need by folding one or all three seats down to accommodate up to 88.8 cubic feet of cargo.¹¹



See numbered footnotes in Disclosures section.

Technology that keeps up with you.

Take advantage of smart and convenient technologies designed to simplify your everyday life. Trial periods are available on select models for the listed Connected Services.*



Toyota App

With active applicable Connected Services¹² subscriptions, the Toyota app¹³ allows you to stay connected to your 4Runner wherever you go. Available for Apple^{®14} and Android^{™15} devices.

- ✓ Remote Vehicle Start¹⁶ and Lock/Unlock Doors
- ✓ Check Up on Your Toyota's Health
- ✓ Schedule a Service Appointment
- ✓ Shop for Genuine Toyota Parts and Accessories
- ✓ Make a Payment With Your TFS Account



Safety Connect[®]

Round-the-clock help when the unexpected happens.¹⁷

- ✓ Emergency Assistance Button (SOS)
- ✓ Enhanced Roadside Assistance¹⁸
- ✓ Automatic Collision Notification
- ✓ Stolen Vehicle Locator¹⁹



Service Connect

Being proactive to help keep your vehicle in peak condition.²⁰

- ✓ Vehicle Health Report
- ✓ Vehicle Maintenance Alert
- ✓ Maintenance Reminder



Wi-Fi Connect

Turn your Toyota into a hotspot with 4G connectivity.²¹

- ✓ AT&T Hotspot



Dynamic Navigation

Dynamic Navigation²² provides you with the most up-to-date map data, routes and points of interest (POIs) on your vehicle's factory-installed navigation system, through real-time updates downloaded from the Cloud.

- ✓ Dynamic Map
- ✓ Dynamic Route
- ✓ Dynamic POI



Destination Assist

Destination Assist²³ provides drivers 24-hour access to a live agent who can provide directions through the vehicle's factory-installed navigation system to an address or point of interest.



Remote Connect

Manage your vehicle through the Toyota app, including Remote Start and much more.¹⁶

- ✓ Remote Vehicle Start
- ✓ Unlock/Lock
- ✓ Remote Notifications
- ✓ Guest Driver
- ✓ Smartwatch Compatibility²⁴
- ✓ Amazon Alexa²⁵ and Google Assistant[™]-Enabled²⁶ Device Capability

*To view included trial details, please visit toyota.com/connected-services.



Limited 4X4 interior shown in Redwood leather trim. Apple CarPlay²⁷ screen shown. Screen depiction accurate at time of posting.

AUDIO MULTIMEDIA

Amplify your drive.

Make every drive more personal. By utilizing your vehicle's touchscreen display and audio multimedia capabilities, you'll always have access to what you want. Whether it's listening to your favorite playlist or finding the most scenic route to your destination, you'll enjoy connectivity and technologies that are all about you.



Apple CarPlay®

Bring along a familiar face. With 4Runner's Apple CarPlay²⁷ compatibility, you can use your compatible iPhone^{®28} with the multimedia system to get directions, make calls, send and receive messages and listen to music, all while staying focused behind the wheel.



Android Auto™

Stay connected on the road. By pairing your compatible Android^{™15} phone with the audio multimedia system, Android Auto^{™29} lets you get real-time traffic alerts, make and receive phone calls, listen to your favorite soundtrack and more.



SiriusXM® Platinum Plan 3-month trial

With SiriusXM® Platinum Plan 3-month trial,³⁰ you get 425+ channels, including 165+ channels in your vehicle, to listen to ad-free music, plus sports, news, comedy and more. Innovative features in 4Runner make it even easier to search, discover and listen than ever before, through personalized channel recommendations curated just "For You." Plus, the Live Sports category puts all your games and teams in one place for easy access.



Amazon Alexa

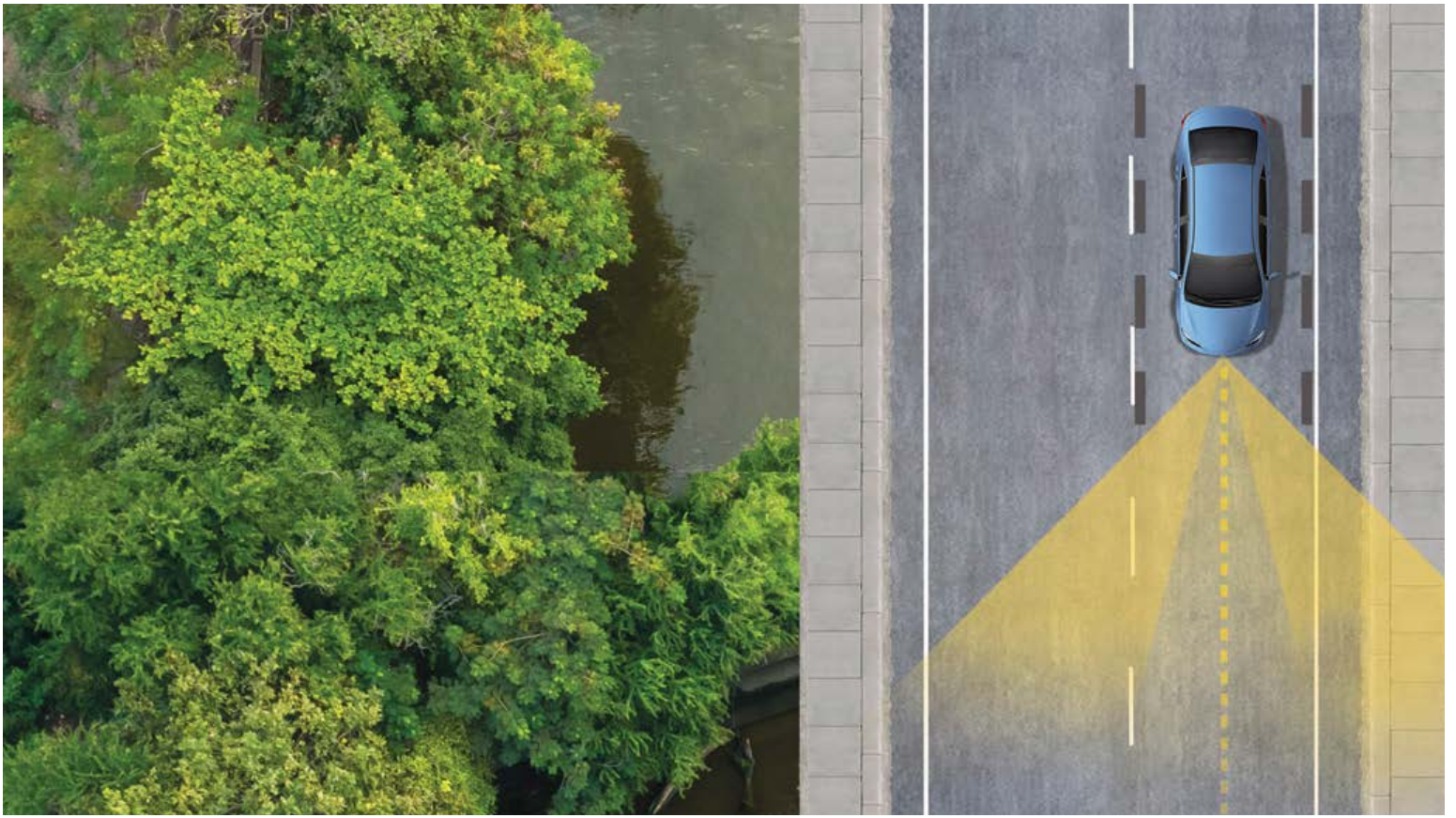
Almost anywhere the road takes you, Amazon Alexa²⁵ connectivity follows. With a smartphone connection and the Toyota+Alexa app, all you have to do is ask Alexa to play music, listen to audiobooks, hear the news, check weather, control smart-home devices and more.



Available JBL® Premium Audio System

Feel the difference and hear the truth. Designed specifically for your Toyota, JBL^{®9} finely tunes each speaker to the interior of the vehicle. Just turn up the volume to hear the crisp, rich, vibrant sound come through.

See numbered footnotes in Disclosures section.



TOYOTA SAFETY SENSE™ P (TSS-P)

Peace of mind comes standard.

Toyota Safety Sense™ (TSS-P)³¹ is a bundle of active safety features included on many new Toyota vehicles at no additional cost. These innovative features were designed to help protect you and your passengers from harm.



Pre-Collision System with Pedestrian Detection³²



Dynamic Radar Cruise Control³³



Lane Departure Alert³⁴



Automatic High Beams³⁵

4RUNNER MODELS



SR5

Includes these key features

Mechanical/Performance

- ✓ 4.0-Liter V6 with 270 hp
- ✓ 5-speed automatic transmission
- ✓ Rear-Wheel Drive (RWD)
- ✓ Automatic Limited-Slip Differential
- ✓ Available part-time 4WD system with Active Traction Control (A-TRAC)
- ✓ Hill Start Assist Control (HAC)² and available Downhill Assist Control (DAC)³⁶
- ✓ Up to 16 city/19 highway/17 combined EPA-est. mpg³⁷

Exterior Features

- ✓ LED headlights
- ✓ LED fog lights
- ✓ LED taillights
- ✓ Skid plates — on engine/front suspension, fuel tank and transfer case (transfer case on 4x4 models only)
- ✓ 17-in. 6-spoke alloy wheels with P265/70R17 tires
- ✓ Heated power outside mirrors

Interior Features

- ✓ Smart Key System with Push Button Start and remote illuminated entry
- ✓ Backup camera³⁸ with projected path
- ✓ Fabric-trimmed seats
 - 8-way power-adjustable driver's seat with power lumbar support
 - 4-way adjustable front passenger seat
 - 40/20/40 split reclining and fold-flat second-row seat
- ✓ Leather-trimmed tilt/telescopic steering wheel with audio and Bluetooth³⁹ hands-free phone and voice command controls
- ✓ Three (one front-row and two second-row) USB ports⁴⁰
- ✓ Two (one front and one cargo area) 12V DC auxiliary power outlets⁴¹
- ✓ One (cargo area) 120V 100W/400W AC power outlet⁴²

Audio Multimedia

- ✓ Audio includes:
 - 8.0-in. touchscreen and eight speakers
 - Android Auto^{TM29} & Apple CarPlay^{®27} compatible
 - SiriusXM[®] with 3-month Platinum Plan trial subscription³⁰
- ✓ Connected Services¹² trials, including Safety Connect[®] 1-year trial,¹⁷ Service Connect up to 10-year trial,²⁰ Wi-Fi Connect up to 2GB within 3-month trial²¹ 4G network dependent.

Safety Features

- ✓ Toyota Safety Sense[™] P (TSS-P)³¹
- ✓ Star Safety System[™]
- ✓ Eight airbags⁴³

Packages/Options

- ✓ Premium Audio Package includes:
 - 8.0-in. touchscreen and eight speakers
 - Dynamic Navigation²² with Destination Assist²³
 - Android Auto^{TM29} & Apple CarPlay^{®27} compatible
 - SiriusXM[®] with 3-month Platinum Plan trial subscription³⁰
 - HD Radio^{TM44}
- ✓ Running boards
- ✓ 50/50 split fold-flat third-row seat and sliding second row with passenger-side one-touch access to third-row seat
- ✓ Sliding rear cargo deck with under-floor storage box



TRD Sport

Adds to or replaces features offered on SR5

Mechanical/Performance

- ✓ Available part-time 4WD system with Active Traction Control (A-TRAC)
- ✓ X-REAS Sport Enhancement Suspension
- ✓ Hill Start Assist Control (HAC)² and available Downhill Assist Control (DAC)³⁶
- ✓ Up to 16 city/19 highway/17 combined EPA-est. mpg³⁷

Exterior Features

- ✓ Color-keyed TRD hood scoop
- ✓ "TRD Sport" badge on C-pillars

Interior Features

- ✓ SofTex[®]-trimmed¹⁰ seats
 - 8-way power-adjustable driver's seat with power lumbar support
 - 40/20/40 split reclining and fold-flat second-row seat
- ✓ TRD shift knob
- ✓ TRD Sport carpet floor mats⁴⁵
- ✓ "TRD" gray lettering on driver and front passenger headrests

Audio Multimedia

- ✓ Premium Audio Package includes:
 - 8.0-in. touchscreen and eight speakers
 - Dynamic Navigation²² with Destination Assist²³
 - Android Auto^{TM29} & Apple CarPlay^{®27} compatible
 - SiriusXM[®] with 3-month Platinum Plan trial subscription³⁰
 - HD Radio^{TM44}
- ✓ Connected Services¹² trials, including Safety Connect[®] 1-year trial,¹⁷ Service Connect up to 10-year trial,²⁰ Wi-Fi Connect up to 2GB within 3-month trial²¹ 4G network dependent.

Safety Features

- ✓ Toyota Safety Sense[™] P (TSS-P)³¹
- ✓ Star Safety System[™]
- ✓ Eight airbags⁴³

Packages/Options

- ✓ Technology Package — Blind Spot Monitor (BSM)⁴⁶ with Rear Cross-Traffic Alert (RCTA)⁴⁷
- ✓ Sliding rear cargo deck with under-floor storage box
- ✓ Panoramic View Monitor⁴⁸
- ✓ Automatic running boards



SR5 Premium

Adds to or replaces features offered on SR5

Mechanical/Performance

- ✓ Available part-time 4WD system with Active Traction Control (A-TRAC)
- ✓ Hill Start Assist Control (HAC)² and available Downhill Assist Control (DAC)³⁶
- ✓ Up to 16 city/19 highway/17 combined EPA-est. mpg³⁷

Exterior Features

- ✓ Heated power outside mirrors with turn signal indicators

Interior Features

- ✓ SofTex[®]-trimmed¹⁰ seats
 - Heated front seats
 - 8-way power-adjustable driver's seat with power lumbar support
 - 4-way power-adjustable front passenger seat
 - 40/20/40 split reclining and fold-flat second-row seat
- ✓ Auto-dimming rearview mirror

Audio Multimedia

- ✓ Premium Audio includes:
 - 8.0-in. touchscreen and eight speakers
 - Dynamic Navigation²² with Destination Assist²³
 - Android Auto^{TM29} & Apple CarPlay^{®27} compatible
 - SiriusXM[®] with 3-month Platinum Plan trial subscription³⁰
 - HD Radio^{TM44}
- ✓ Connected Services¹² trials, including Safety Connect[®] 1-year trial,¹⁷ Service Connect up to 10-year trial,²⁰ Wi-Fi Connect up to 2GB within 3-month trial²¹ 4G network dependent.

Safety Features

- ✓ Toyota Safety Sense[™] P (TSS-P)³¹
- ✓ Star Safety System[™]
- ✓ Eight airbags⁴³

Options

- ✓ SR5 Premium Plus Package includes:
 - Panoramic View Monitor⁴⁸
- ✓ Power tilt/slide moonroof with sunshade
- ✓ Running boards
- ✓ SofTex[®]-trimmed¹⁰ 50/50 split fold-flat third-row seat and sliding second row with passenger-side one-touch access to third-row seat
- ✓ Sliding rear cargo deck with under-floor storage box

4RUNNER MODELS



TRD Off-Road

Adds to or replaces features offered on SR5

Mechanical/Performance

- ✓ Part-time 4WD system with Active Traction Control (A-TRAC)
- ✓ Hill Start Assist Control (HAC)² and Multi-Terrain Select (MTS) and Crawl Control (CRAWL)⁴
- ✓ Locking rear differential
- ✓ Up to 16 city/19 highway/17 combined EPA-est. mpg³⁷

Exterior Features

- ✓ 17-in. 7-spoke alloy wheels with black-painted accents and P265/70R17 tires
- ✓ Color-keyed front and rear bumpers with silver accents and color-keyed hood scoop
- ✓ "TRD Off-Road" external hard badges

Interior Features

- ✓ Overhead console with Multi-Terrain Select (MTS) and Crawl Control (CRAWL)⁴ switches
- ✓ TRD shift knob
- ✓ TRD Off-Road floor mats⁴⁵

Audio Multimedia

- ✓ Audio Plus includes:
 - 8.0-in. touchscreen and eight speakers
 - Android Auto^{TM29} & Apple CarPlay^{®27} compatible
 - SiriusXM[®] with 3-month Platinum Plan trial subscription³⁰
 - HD Radio^{TM44}
- ✓ Connected Services¹² trials, including Safety Connect[®] 1-year trial,¹⁷ Service Connect up to 10-year trial,²⁰ Wi-Fi Connect up to 2GB within 3-month trial,²¹ 4G network dependent.

Safety Features

- ✓ Toyota Safety SenseTM P (TSS-P)³¹
- ✓ Star Safety SystemTM
- ✓ Eight airbags⁴³

Packages/Options

- ✓ Premium Audio Package includes:
 - 8.0-in. touchscreen and eight speakers
 - Dynamic Navigation²² with Destination Assist²³
 - Android Auto^{TM29} & Apple CarPlay^{®27} compatible
 - SiriusXM[®] with 3-month Platinum Plan trial subscription³⁰
 - HD Radio^{TM44}
- ✓ Running boards
- ✓ Kinetic Dynamic Suspension System (KDSS)
- ✓ Sliding rear cargo deck with under-floor storage box
- ✓ Premium Audio with Dynamic Navigation²² and Destination Assist²³



TRD Off-Road Premium

Adds to or replaces features offered on TRD Off-Road

Mechanical/Performance

- ✓ Part-time 4WD system with Active Traction Control (A-TRAC)
- ✓ Hill Start Assist Control (HAC)² and Multi-Terrain Select (MTS) and Crawl Control (CRAWL)⁴
- ✓ Locking rear differential
- ✓ Up to 16 city/19 highway/17 combined EPA-est. mpg³⁷

Exterior Features

- ✓ Heated power outside mirrors with turn signal indicators

Interior Features

- ✓ SofTex[®]-trimmed¹⁰ seats
 - Heated front seats
 - 8-way power-adjustable driver's seat with power lumbar support
 - 4-way power-adjustable front passenger seat
 - 40/20/40 split reclining and fold-flat second-row seat
- ✓ "TRD" red lettering on driver and front passenger headrests
- ✓ Auto-dimming rearview mirror

Audio Multimedia

- ✓ Premium Audio includes:
 - 8.0-in. touchscreen and eight speakers
 - Dynamic Navigation²² with Destination Assist²³
 - Android Auto^{TM29} & Apple CarPlay^{®27} compatible
 - SiriusXM[®] with 3-month Platinum Plan trial subscription³⁰
 - HD Radio^{TM44}
- ✓ Connected Services¹² trials, including Safety Connect[®] 1-year trial,¹⁷ Service Connect up to 10-year trial,²⁰ Wi-Fi Connect up to 2GB within 3-month trial,²¹ 4G network dependent.

Safety Features

- ✓ Toyota Safety SenseTM P (TSS-P)³¹
- ✓ Star Safety SystemTM
- ✓ Eight airbags⁴³

Options

- ✓ Off-Road Premium Plus Package includes:
 - Multi-Terrain Monitor (MTM)³
- ✓ Power tilt/slide moonroof with sunshade
- ✓ Running boards
- ✓ Kinetic Dynamic Suspension System (KDSS)
- ✓ Sliding rear cargo deck with under-floor storage box



40th Anniversary Special Edition

Adds to or replaces features offered on SR5 Premium

Mechanical/Performance

- ✓ Part-time 4WD system with Active Traction Control (A-TRAC)
- ✓ Hill Start Assist Control (HAC)²
- ✓ Downhill Assist Control (DAC)³⁶
- ✓ Up to 16 city/19 highway/17 combined EPA-est. mpg³⁷

Exterior Features

- ✓ 17-in. bronze-colored alloy wheels with P265/70R17 tires
- ✓ Heritage "TOYOTA" front color-keyed grille
- ✓ Bronze-colored "40th Anniversary" rear exterior badge and external emblem overlays
- ✓ Unique racing-inspired tri-color striped graphics

Interior Features

- ✓ SofTex[®]-trimmed¹⁰ seats with bronze-colored accent stitching
 - Heated front seats
 - 8-way power-adjustable driver's seat with power lumbar support
 - 4-way power-adjustable front passenger seat
 - 40/20/40 split reclining and fold-flat second-row seat
- ✓ 40th Anniversary Special Edition logo embossed on driver and front passenger headrests
- ✓ 40th Anniversary interior emblem on dash

Audio Multimedia

- ✓ Premium Audio includes:
 - 8.0-in. touchscreen and eight speakers
 - Dynamic Navigation²² with Destination Assist²³
 - Android Auto^{TM29} & Apple CarPlay^{®27} compatible
 - SiriusXM[®] with 3-month Platinum Plan trial subscription³⁰
 - HD Radio^{TM44}
- ✓ Connected Services¹² trials, including Safety Connect[®] 1-year trial,¹⁷ Service Connect up to 10-year trial,²⁰ Wi-Fi Connect up to 2GB within 3-month trial,²¹ 4G network dependent.

Safety Features

- ✓ Toyota Safety SenseTM P (TSS-P)³¹
- ✓ Star Safety SystemTM
- ✓ Eight airbags⁴³

4RUNNER MODELS



Limited

Adds to or replaces features offered on SR5 Premium

Mechanical/Performance

- ✓ Available full-time 4WD system with Active Traction Control (A-TRAC) and Torsen^{®49} limited-slip center differential with locking feature
- ✓ X-REAS Sport Enhancement Suspension
- ✓ Up to 16 city/19 highway/17 combined EPA-est. mpg³⁷

Exterior Features

- ✓ Power tilt/slide moonroof with sunshade
- ✓ 20-in. split 6-spoke alloy wheels with P245/60R20 tires
- ✓ Front and rear parking assist sonar⁵⁰
- ✓ Color-keyed front and rear bumpers and side rocker panels with chrome inserts, chrome door handles and chrome-accented front grille insert

Interior Features

- ✓ Dual zone automatic climate control with air filter and second-row vents
- ✓ Perforated leather-trimmed seats
 - Heated and ventilated front seats
 - 8-way power-adjustable driver's seat with memory function and power lumbar support
 - 4-way adjustable front passenger seat

Audio Multimedia

- Premium Audio with JBL^{®9} includes:
 - 8.0-in. touchscreen and 15 JBL^{®9} speakers
 - Dynamic Navigation²² with Destination Assist²³
 - Android Auto^{™29} & Apple CarPlay^{®27} compatible
 - SiriusXM[®] with 3-month Platinum Plan trial subscription³⁰
 - HD Radio^{™44}
- ✓ Connected Services¹² trials, including Safety Connect[®] 1-year trial,¹⁷ Service Connect up to 10-year trial,²⁰ Remote Connect 1-year trial,¹⁶ Wi-Fi Connect up to 2GB within 3-month trial.²¹ 4G network dependent.

Safety Features

- ✓ Toyota Safety Sense[™] P (TSS-P)³¹
- ✓ Star Safety System[™]
- ✓ Eight airbags⁴³

Options

- ✓ Automatic running boards
- ✓ Leather-trimmed 50/50 split fold-flat third-row seat and sliding second row with passenger-side one-touch access to third row
- ✓ Sliding rear cargo deck with under-floor storage box



TRD Pro

Includes these key features

Mechanical/Performance

- ✓ 4.0-Liter V6 with 270 hp
- ✓ 5-speed automatic transmission
- ✓ Part-time 4WD system with Active Traction Control (A-TRAC)
- ✓ Hill Start Assist Control (HAC)² and Multi-Terrain Select (MTS) and Crawl Control (CRAWL)⁴
- ✓ TRD FOX^{®8} high-performance shocks with rear remote reservoirs
- ✓ TRD-tuned front springs
- ✓ Locking rear differential
- ✓ Up to 16 city/19 highway/17 combined EPA-est. mpg³⁷

Exterior Features

- ✓ High-performance LED fog lights
- ✓ Black "TRD PRO" external hard badges
- ✓ Unique "TOYOTA" front grille
- ✓ Black roof basket
- ✓ Power tilt/slide moonroof with sunshade
- ✓ TRD-stamped aluminum front skid plate
- ✓ TRD 17-in. matte-black alloy wheels with P265/70R17 A/T tires

Interior Features

- ✓ Dual zone automatic climate control with air filter and second-row vents
- ✓ Smart Key System with Push Button Start and remote illuminated entry
- ✓ Overhead console with Multi-Terrain Select (MTS) and Crawl Control (CRAWL)⁴ switches
- ✓ SofTex[®]-trimmed¹⁰ seats
 - Heated front seats
 - 8-way power-adjustable driver's seat with power lumbar support
 - 4-way power-adjustable front passenger seat
 - 40/20/40 split reclining and fold-flat second-row seat
- ✓ "TRD" red lettering on driver and front passenger headrests
- ✓ TRD Pro all-weather floor liners⁴⁵
- ✓ TRD shift knob

Audio Multimedia

- ✓ Premium Audio with JBL^{®9} includes:
 - 8.0-in. touchscreen and 15 JBL^{®9} speakers
 - Dynamic Navigation²² with Destination Assist²³
 - Android Auto^{™29} & Apple CarPlay^{®27} compatible
 - SiriusXM[®] with 3-month Platinum Plan trial subscription³⁰
 - HD Radio^{™44}
- ✓ Connected Services¹² trials, including Safety Connect[®] 1-year trial,¹⁷ Service Connect up to 10-year trial,²⁰ Remote Connect 1-year trial,¹⁶ and Wi-Fi Connect up to 2GB within 3-month trial.²¹ 4G network dependent.

Safety Features

- ✓ Toyota Safety Sense[™] P (TSS-P)³¹
- ✓ Star Safety System[™]
- ✓ Eight airbags⁴³

Options

- ✓ Running boards
- ✓ Sliding rear cargo deck with under-floor storage box

4RUNNER COLORS & TRIMS



Midnight Black Metallic



Nautical Blue Metallic



Lunar Rock



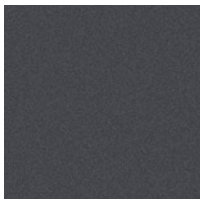
Lime Rush



Barcelona Red Metallic



Solar Octane⁵¹



Magnetic Gray Metallic



Classic Silver Metallic



Blizzard Pearl⁵¹

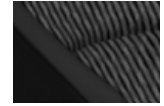


Ice Cap

SR5 fabric



Sand Beige



Graphite

SR5 SofTex^{®10} trim

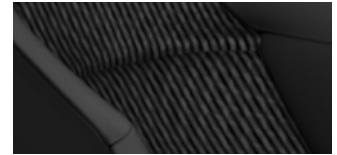


Sand Beige



Graphite

TRD Off-Road fabric in Black



TRD Sport SofTex^{®10} trim in Black



TRD Off-Road/TRD Pro SofTex^{®10} trim in Black



40th Anniversary Special Edition SofTex^{®10} trim in Black



Limited leather trim in Redwood



Sand Beige



Black

4RUNNER WHEELS



SR5: 17-in. 6-spoke alloy wheel



TRD Sport: 20-in. split 6-spoke alloy wheel



TRD Off-Road: 17-in. 7-spoke alloy wheel



40th Anniversary Special Edition: 17-in. bronze-colored alloy wheel



Limited: 20-in. split 6-spoke alloy wheel



TRD Pro: TRD 17-in. matte-black alloy wheel

4RUNNER ACCESSORIES

This is a great way to add extra personality to your 4Runner. Not every accessory is available in your area, so for a complete list of accessories, go to toyota.com/4runner/accessories.



Cargo tray¹¹



Roof rack cross bars



All-weather floor liners⁴⁵



Predator tube step



Blackout emblem overlays



Black chrome exhaust tip



TRD 17-in. matte-black alloy wheels



Mudguards



In-vehicle safe by Console Vault®

WARRANTIES

Every Toyota Car, Truck and SUV is built to exceptional standards. And that's not idle boasting. We back it up with these Limited Warranty Coverages:

Basic: 36 months/36,000 miles (all components other than normal wear and maintenance items).

Powertrain: 60 months/60,000 miles (engine, transmission/transaxle, drive system, seatbelts and airbags).

Rust-Through: 60 months/unlimited miles (corrosion perforation of sheet metal).

Emissions: Coverages vary under Federal and California regulations. Refer to applicable *Warranty and Maintenance Guide* for details.

Accessories: For Genuine Toyota Accessories purchased at the time of the new vehicle purchase, the Toyota Accessory Warranty coverage is in effect for 36 months/36,000 miles from the vehicle's in-service date, which is the same coverage as the Toyota New Vehicle Limited Warranty.

For Genuine Toyota Accessories purchased after the new vehicle purchase the coverage is 12 months, regardless of mileage, from the date the accessory was installed on the vehicle, or the remainder of any applicable new vehicle warranty, whichever provides greater coverage.

You may be eligible for transportation assistance if it's necessary that your vehicle be kept overnight for repairs covered under warranty. Please see your authorized Toyota dealership for further details.

For complete details about Toyota's warranties, please visit www.toyota.com, refer to the applicable *Warranty and Maintenance Guide* or see your Toyota dealer.

4RUNNER FEATURES⁵²

S = Standard O = Optional

Exterior	SR5	TRD Sport	SR5 Premium	TRD Off-Road	TRD Off-Road Premium	40th Anniversary Special Edition	Limited	TRD Pro
LED headlights	S	S	S	S	S	S	S	S
Auto on/off headlights							S	S
LED high beams	S	S	S	S	S	S	S	S
LED fog lights	S	S	S	S	S	S	S	S
LED taillights	S	S	S	S	S	S	S	S
Skid plate covering engine and front suspension	S	S	S	S	S	S	S	S
Skid plate covering transfer case (4x4 only)				S	S	S		S
TRD Pro-stamped front aluminum skid plate								S
17-in. 6-spoke alloy wheels with P265/70R17 tires	S		S					
17-in. 7-spoke alloy wheels with black accents and P265/70R17 tires				S	S			
17-in. matte-black flow-form TRD alloy wheels with P265/70R17 A/T tires								S
17-in. bronze-colored alloy wheels with P265/70R17 tires						S		
20-in. split 6-spoke alloy wheels with P245/60R20 tires		S					S	
Heated power outside mirrors	S	S		S				S
Heated power outside mirrors with turn signal indicators			S		S	S	S	
Roof rails	S	S	S	S	S	S	S	
TRD roof rack								S
Unique "TOYOTA" front grille								S
Black "TRD PRO" external hard badges								S
Heritage "TOYOTA" front color-keyed grille						S		
Bronze-colored external emblem overlays						S		
"TRD Off-Road" external hard badges				S	S			
"TRD Sport" badge on C-pillars		S						
Chrome "SR5" external hard badges	S		S					
Bronze-colored "40th Anniversary" external hard badge						S		
Unique racing-inspired tri-color striped graphics						S		
Chrome "Limited" external hard badges							S	
Chrome door handles with touch-sensor lock/unlock feature							S	
Aerodynamic variable intermittent windshield wipers with mist cycle	S	S	S	S	S	S	S	S
Windshield wiper de-icer	S	S	S	S	S	S	S	S
Front and rear mudguards	S		S	S	S	S		S
Power windows with auto up/down and jam protection in all positions	S	S	S	S	S	S	S	S
Power rear liftgate window with auto up/down and jam protection	S	S	S	S	S	S	S	S
Rear liftgate window defogger with timer and UV protection	S	S	S	S	S	S	S	S
Interior								
Privacy glass on rear side, quarter and rear liftgate windows	S	S	S	S	S	S	S	S
Power tilt/slide moonroof with sunshade			O		O	S	S	S
Color-keyed rear spoiler with center LED high-mount stop light and integrated concealed rear wiper with mist cycle	S	S	S	S	S	S	S	S
Power door locks with programmable auto-door lock logic	S	S	S	S	S	S	S	S
In-key remote keyless entry system	S	S	S	S	S	S	S	S
Smart Key System with Push Button Start and remote illuminated entry	S	S	S	S	S	S	S	S
Automatic running boards		O					O	
Running boards	O	O	O	O	O	O		O
Air conditioning with air filter and second-row vents	S	S	S	S	S	S		
Dual zone automatic climate control with air filter and second-row vents							S	S
Backup camera ³⁸ with projected path	S	S	S	S	S	S	S	S
Multi-Terrain Monitor (MTM) ³ with selectable front, side or rear views					O			S
Fabric-trimmed front seats; 8-way power-adjustable driver's seat with power lumbar support; 4-way adjustable front passenger seat	S			S				
Fabric-trimmed 40/20/40 split reclining and fold-flat second-row seat	S			S				
Fabric-trimmed 50/50 split fold-flat third-row seat and sliding second-row with passenger-side one-touch access to third-row seat	O							
SoftTex®-trimmed, ¹⁰ 8-way power-adjustable driver's seat with power lumbar support		S						
SoftTex®-trimmed, ¹⁰ heated front seats; 8-way power-adjustable driver's seat with power lumbar support; 4-way power-adjustable front passenger seat			S		S			S
SoftTex®-trimmed ¹⁰ 40/20/40 split reclining and fold-flat second-row seat		S	S		S	S		S
SoftTex®-trimmed ¹⁰ 50/50 split fold-flat third-row seat and sliding second-row with passenger-side one-touch access to third-row seat			O					
"TRD" red lettering on driver and front passenger headrests					S			S
"TRD" gray lettering on driver and front passenger headrests		S						

See numbered footnotes in Disclosures section.

4RUNNER FEATURES⁵²

S = Standard O = Optional

Interior (continued)	SR5	TRD Sport	SR5 Premium	TRD Off-Road	TRD Off-Road Premium	40th Anniversary Special Edition	Limited	TRD Pro
Black SofTex®-trimmed ¹⁰ heated front seats with bronze-colored accent stitching; 8-way power-adjustable driver's seat with power lumbar support; 4-way power-adjustable front passenger seat						S		
40th Anniversary Special Edition logo embossed on driver and front passenger headrests						S		
40th Anniversary interior emblem on dash						S		
Perforated leather-trimmed, heated and ventilated front seats; 8-way power-adjustable driver's seat with memory function and power lumbar support; 4-way power-adjustable front passenger seat							S	
Perforated leather-trimmed 40/20/40 split reclining and fold-flat second-row seat							S	
Leather-trimmed 50/50 split fold-flat third-row seat and sliding second-row with passenger-side one-touch walk-in function							O	
Sliding rear cargo deck with under-floor storage compartment	O	O	O	O	O		O	O
Accessory cargo net ¹¹			S		S		S	S
Center console storage compartment with coin, tissue and pen holders	S	S	S			S	S	
Center console storage compartment with coin, tissue and pen holders with carbon-fiber pattern				S	S			S
Overhead console with sunglasses storage	S	S	S			S	S	
Overhead console with Multi-Terrain Select (MTS) and Crawl Control (CRAWL) ⁴ switches				S	S			S
Optitron instrumentation with speedometer, tachometer, coolant temperature and fuel gauges; LCD display with odometer, tripmeters and average fuel economy; Eco driving indicator and warning messages	S	S	S	S	S	S	S	S
Multi-Information Display (MID) with outside temperature, clock, average fuel economy and distance to empty	S	S	S	S	S	S	S	S
Leather-trimmed tilt/telescopic steering wheel with audio and Bluetooth ^{®39} hands-free phone and voice-command controls	S	S	S	S	S	S	S	S
HomeLink ^{®53} universal transceiver			S		S	S	S	S
Dual sun visors with illuminated vanity mirrors and extenders	S	S	S	S	S	S	S	S
Auto-dimming rearview mirror			S		S	S	S	S
Glare-resistant mechanical inside rearview mirror	S	S		S				
Ten (12 on three-row models) cup and bottle holders	S	S	S	S	S	S	S	
Two (one front and one cargo area) 12V DC auxiliary power outlets ⁴¹	S	S	S	S	S	S	S	S
Three (one front-row and two second-row) USB ports ⁴⁰	S	S	S	S	S	S	S	S
One (cargo area) 120V 100W/400W AC power outlet ⁴²	S	S	S	S	S	S	S	S
Gated shift lever with sequential shift mode	S	S	S	S	S	S	S	S
TRD shift knob		S		S	S			S
TRD Pro all-weather floor liners ⁴⁵								S
TRD Sport carpet floor mats ⁴⁵		S						
TRD Off-Road floor mats ⁴⁵				S	S			
Foot pedal parking brake	S	S	S	S	S	S	S	S
First aid kit	S	S	S	S	S	S	S	S

Audio Multimedia

Audio — 8-in. touchscreen, eight speakers, AM/FM radio, Android Auto^{™29} & Apple CarPlay^{®27} & Amazon Alexa²⁵ compatible, USB media port,⁴⁰ two USB charge ports,⁴⁰ advanced voice recognition,⁵⁴ hands-free phone capability and music streaming³⁹ via Bluetooth^{®39} wireless technology, SiriusXM[®] with 3-month Platinum Plan trial subscription,³⁰ Connected Services¹² — Safety Connect[®] with 1-year trial,¹⁷ Wi-Fi Connect with up to 2 GB within 3-month trial.²¹ See toyota.com/audio-multimedia for details. 4G network dependent.

S S

Audio Plus — 8-in. touchscreen, eight speakers, AM/FM radio, HD Radio,^{™44} Android Auto^{™29} & Apple CarPlay^{®27} & Amazon Alexa²⁵ compatible, USB media port,⁴⁰ two USB charge ports,⁴⁰ advanced voice recognition,⁵⁴ hands-free phone capability and music streaming³⁹ via Bluetooth^{®39} wireless technology, SiriusXM[®] with 3-month Platinum Plan trial subscription.³⁰ Connected Services¹² — Safety Connect[®] with 1-year trial,¹⁷ Wi-Fi Connect with up to 2GB within 3-month trial.²¹ See toyota.com/audio-multimedia for details. 4G network dependent.

S


Premium Audio — 8-in. touchscreen, eight speakers, AM/FM radio, HD Radio,^{™44} Android Auto^{™29} & Apple CarPlay^{®27} & Amazon Alexa²⁵ compatible, USB media port,⁴⁰ two USB charge ports,⁴⁰ Dynamic Navigation with up to 3-year trial,² includes Dynamic POI Search and Dynamic Voice Recognition,⁵⁵ advanced voice recognition,⁵⁴ hands-free phone capability and music streaming³⁹ via Bluetooth^{®39} wireless technology, SiriusXM[®] with 3-month Platinum Plan trial subscription,³⁰ Connected Services¹² — Safety Connect[®] with 1-year trial,¹⁷ Wi-Fi Connect with up to 2GB within 3-month trial,²¹ Destination Assist with 1 year trial.²³ See toyota.com/audio-multimedia for details. 4G network dependent.

O O S O S S

Premium Audio with JBL^{®99} Speakers — 8-in. touchscreen, 15 JBL^{®99} speakers including subwoofer and amplifier, AM/FM radio, HD Radio,^{™44} Android Auto^{™29} & Apple CarPlay^{®27} & Amazon Alexa²⁵ compatible, USB media port,⁴⁰ two USB charge ports,⁴⁰ Dynamic Navigation with up to 3-year trial,² includes Dynamic POI Search and Dynamic Voice Recognition,⁵⁵ hands-free phone capability and music streaming³⁹ via Bluetooth^{®39} wireless technology, SiriusXM[®] with 3-month Platinum Plan trial subscription,³⁰ Connected Services¹² — Safety Connect[®] with 1-year trial,¹⁷ Service Connect with up to 10-year trial,²⁰ Remote Connect with 1-year trial,¹⁶ Wi-Fi Connect with up to 2GB within 3-month trial,²¹ Destination Assist with 1-year trial.²³ See toyota.com/audio-multimedia for details. 4G network dependent.

S S

See numbered footnotes in Disclosures section.

	SR5	TRD Sport	SR5 Premium	TRD Off-Road	TRD Off-Road Premium	40th Anniversary Special Edition	Limited	TRD Pro
Safety and Convenience								
Toyota Safety Sense™ P (TSS-P) ³¹ — Pre-Collision System with Pedestrian Detection (PCS w/PD), ³² Lane Departure Alert (LDA), ³⁴ Automatic High Beams (AHB), ³⁵ Dynamic Radar Cruise Control (DRCC) ³³	S	S	S	S	S	S	S	S
 Star Safety System™ — includes Vehicle Stability Control (VSC), ⁵⁶ Traction Control, Anti-lock Brake System (ABS) with Electronic Brake-force Distribution (EBD), Brake Assist (BA) ⁵⁷ and Smart Stop Technology® (SST) ⁵⁸	S	S	S	S	S	S	S	S
Driver and front passenger Advanced Airbag System ⁴³	S	S	S	S	S	S	S	S
Eight airbags ⁴³ — driver and front passenger TAP (Thorax, Abdomen, Pelvis) front seat-mounted side airbags, driver and front passenger knee airbags, and front and all row (third-row airbags on all models) Roll-sensing Side Curtain Airbags (RSCA)	S	S	S	S	S	S	S	S
Driver and front passenger active headrests ⁵⁹	S	S	S	S	S	S	S	S
Driver and front passenger seatbelt pretensioners with force limiters	S	S	S	S	S	S	S	S
3-point seatbelts for all seating positions; driver-side Emergency Locking Retractor (ELR) and Automatic/Emergency Locking Retractors (ALR/ELR) on all passenger belts	S	S	S	S	S	S	S	S
LATCH (Lower Anchors and Tethers for CHildren) includes lower anchors on outboard second-row seats and tether anchors on all second-row seats	S	S	S	S	S	S	S	S
Child-protector rear door locks and power window lockout	S	S	S	S	S	S	S	S
Side-impact door beams	S	S	S	S	S	S	S	S
Tire Pressure Monitor System (TPMS) ⁶⁰	S	S	S	S	S	S	S	S
Daytime Running Lights (DRL) with manual on/off feature	S	S	S	S	S	S	S	S
Anti-theft system with engine immobilizer ⁶¹	S	S	S	S	S	S	S	S
Front and rear parking assist sonar ⁵⁰							S	

Packages and Options

SR5 Premium Plus Package with SofTex®-trimmed ¹⁰ seats and Panoramic View Monitor								
Off-Road Premium Plus Package with SofTex®-trimmed ¹⁰ seats and Multi-Terrain Monitor (MTM) ³								
Technology Package — Blind Spot Monitor (BSM) ⁴⁶ with Rear Cross-Traffic Alert (RCTA) ⁴⁷		O						
Kinetic Dynamic Suspension System (KDSS)				O	O			
Sliding rear cargo deck with under-floor storage compartment	O	O	O	O	O		O	O
Panoramic View Monitor ⁴⁸		O	O		O		S	S
Audio Plus — 8-in. touchscreen, eight speakers, AM/FM radio, HD Radio, ^{TM44} Android Auto ^{TM29} & Apple CarPlay ²⁷ & Amazon Alexa ²⁵ compatible, USB media port, ⁴⁰ two USB charge ports, ⁴⁰ advanced voice recognition, ⁵⁴ hands-free phone capability and music streaming ³⁹ via Bluetooth ³⁹ wireless technology, SiriusXM [®] with 3-month Platinum Plan trial subscription. ³⁰ Connected Services ¹² — Safety Connect [®] with 1-year trial, ¹⁷ Wi-Fi Connect with up to 2GB within 3-month trial. ²¹ See toyota.com/audio-multimedia for details. 4G network dependent.					O			
Premium Audio — 8-in. touchscreen, eight speakers, AM/FM radio, HD Radio, ^{TM44} Android Auto ^{TM29} & Apple CarPlay ²⁷ & Amazon Alexa ²⁵ compatible, USB media port, ⁴⁰ two USB charge ports, ⁴⁰ Dynamic Navigation with up to 3-year trial, ²² includes Dynamic POI Search and Dynamic Voice Recognition, ⁵⁵ advanced voice recognition, ⁵⁴ hands-free phone capability and music streaming ³⁹ via Bluetooth ³⁹ wireless technology, SiriusXM [®] with 3-month Platinum Plan trial subscription. ³⁰ Connected Services ¹² — Safety Connect [®] with 1-year trial, ¹⁷ Wi-Fi Connect with up to 2GB within 3-month trial, ²¹ Destination Assist with 1 year trial. ²³ See toyota.com/audio-multimedia for details. 4G network dependent.	O	O		O				
Fabric-trimmed 50/50 split fold-flat third-row seat and sliding second row with passenger-side one-touch access to third-row seat	O							
SofTex®-trimmed ¹⁰ 50/50 split fold-flat third-row seat and sliding second row with passenger-side one-touch access to third-row seat			O					
Leather-trimmed 50/50 split fold-flat third-row seat and sliding second row with passenger-side one-touch walk-in function							O	
Power tilt/slide moonroof with sunshade			O		O			
Automatic running boards		O				S	O	
Running boards	O	O	O	O	O			O

4RUNNER SPECIFICATIONS

S = Standard O = Optional A = Available

	SR5	TRD Sport	SR5 Premium	TRD Off-Road	TRD Off-Road Premium	40th Anniversary Special Edition	Limited	TRD Pro
Mechanical/Performance								
ENGINE								
4.0-Liter DOHC 24-Valve V6 with Dual Independent Variable Valve Timing with Intelligence (VVT-i); 270 hp @ 5600 rpm; 278 lb.-ft. @ 4400 rpm	S	S	S	S	S	S	S	S
IGNITION SYSTEM								
Electronic, with Toyota Direct Ignition (TDI)	S	S	S	S	S	S	S	S
TRANSMISSION								
5-speed Electronically Controlled automatic Transmission with intelligence (ECT-i) and sequential shift mode	S	S	S	S	S	S	S	S
DRIVETRAIN								
Part-time 4WD system	A	A	A	S	S	S		S
Full-time 4WD							A	
Locking rear differential				S	S			S
Torsen ^{®49} limited-slip center differential with locking feature							A	
Downhill Assist Control (DAC) ³⁶	A	A	A			S	A	
Active Traction Control (A-TRAC)	A			S	S	S		S
OFF-ROAD								
Approach/departure angle (degrees)	30/26	30/26	30/26	33/26	33/26	33/26	30/26	33/26
Ground clearance (in.)	9	9	9	9.6	9.6	9.6	9	9.6
Multi-Terrain Select (MTS)				S	S			S
Crawl Control (CRAWL) ⁴				S	S			S
Hill Start Assist Control (HAC) ²	S	S	S	S	S	S	S	S
BODY CONSTRUCTION								
Reinforced body-on-frame construction	S	S	S	S	S	S	S	S
SUSPENSION								
Coil-spring independent double-wishbone front suspension with stabilizer bar; coil-spring 4-link with lateral rod rear suspension with stabilizer bar	S	S	S	S	S	S	S	S
Kinetic Dynamic Suspension System (KDSS)				O	O			
X-REAS Sport Enhancement Suspension		S					S	
TRD FOX ^{®8} high-performance shocks with rear remote reservoirs								S
TRD-tuned front springs								S
STEERING								
Engine speed-sensing Variable Flow Control (VFC) power-assisted rack-and-pinion steering	S	S	S	S	S	S	S	S
Turning circle diameter, curb to curb (ft.)	37.4	37.4	37.4	37.4	37.4	37.4	37.4	37.4
BRAKES								
Power-assisted 4-wheel ventilated disc brakes (Multi-Terrain ABS on 4Runner TRD Off-Road and TRD Pro)	S	S	S	S	S	S	S	S

4RUNNER SPECIFICATIONS

S = Standard O = Optional

Dimensions	SR5	TRD Sport	SR5 Premium	TRD Off-Road	TRD Off-Road Premium	40th Anniversary Special Edition	Limited	TRD Pro
EXTERIOR (in.)								
Overall height (does not include roof rails or roof rack)	71.5	71.5	71.5	71.5	71.5	71.5	71.5	72
Overall width	75.8	75.8	75.8	75.8	75.8	75.8	75.8	75.8
Overall length	190.2	190.2	190.2	191.3	191.3	190.2	190.7	191.3
Wheelbase	109.8	109.8	109.8	109.8	109.8	109.8	109.8	109.8
Track (front/rear)	63.2/63.2	63.2/63.2	63.2/63.2	63.2/63.2	63.2/63.2	63.2/63.2	63.2/63.2	63.2/63.2
INTERIOR front/second-row/third-row seats (in.)								
Head room	39.3/38.6/34.3	39.3/38.6/—	39.3/38.6/34.3	39.3/38.6/—	39.3/38.6/—	39.3/38.6/34.3		
Head room with moonroof			38.6/38.6/34.3		38.6/38.6/—	38.6/38.6/34.3	38.6/38.6/34.3	38.6/38.6/—
Shoulder room	57.8/57.8/57.7	57.8/57.8/—	57.8/57.8/57.7	57.8/57.8/—	57.8/57.8/—	57.8/57.8/—	57.8/57.8/57.7	57.8/57.8/—
Hip room	56.5/55.7/43.3	55.6/55.7/—	56.5/55.7/43.3	56.5/55.7/—	56.5/55.7/—	56.5/55.7/—	56.5/55.7/43.3	56.5/55.7/—
Leg room	41.7/32.9/29.3	41.7/32.9/—	41.7/32.9/29.3	41.7/32.9/—	41.7/32.9/—	41.7/32.9/—	41.7/32.9/29.3	41.7/32.9/—
INTERIOR CARGO VOLUME (cu.ft.)¹¹								
Cargo volume (cu. ft.) behind front/second-row seats	89.7/47.2	89.7/47.2	89.7/47.2	89.7/47.2	89.7/47.2	89.7/47.2	89.7/47.2	89.7/47.2
Cargo volume (cu. ft.) behind front/second-row seats with sliding deck	88.8/46.3	88.8/46.3	88.8/46.3	88.8/46.3	88.8/46.3	88.8/46.3	88.8/46.3	88.8/46.3
Cargo volume (cu. ft.) behind front/second/third-row seats	88.8/46.3/9.0		88.8/46.3/9.0				88.8/46.3/9.0	

Weights and Capacities

Curb weight (lb.)	4400	4400	4400	4750	4750	4675	4525	4750
Gross Vehicle Weight Rating (GVWR) (lb.)	6100	6100	6100	6300	6300	6300	6100	6300
Fuel tank (gal.)	23	23	23	23	23	23	23	23
Seating capacity (standard/with optional third-row seat)	5/7	5	5/7	5	5	5	5/7	5

Tires

Mud-and-Snow tires	S	S	S	S	S	S	S	
All-terrain tires								S
Full-size spare tire, mounted under body	S	S	S	S	S	S	S	S

Mileage Estimates (mpg city/highway/combined)³⁷

	16/19/17	16/19/17	16/19/17	16/19/17	16/19/17	16/19/17	16/19/17	16/19/17
--	----------	----------	----------	----------	----------	----------	----------	----------

DISCLOSURES

1. The Toyota model or models shown are designed to meet most off-road driving requirements, but off-roading is inherently dangerous and may result in vehicle damage. Toyota encourages responsible operation to help protect you, your vehicle and the environment. Seatbelts should be worn at all times. Do not allow passengers to ride in cargo area. 2. Hill Start Assist Control is designed to help minimize backward rolling on steep ascents. It is not a substitute for safe driving judgment and practices. Factors including speed, grade, surface conditions and driver input can all affect whether HAC will be effective in preventing a loss of control. See *Owner's Manual* for additional limitations and details. 3. The Multi-Terrain Monitor view is limited and can be affected by environmental conditions. See *Owner's Manual* for additional limitations and details. 4. Crawl Control is designed for driving on difficult terrain at low speeds and assists the driver by controlling acceleration and braking, allowing the driver to focus on steering. See *Owner's Manual* for additional limitations and details. 5. Before towing, confirm your vehicle and trailer are compatible, hooked up and loaded properly and that you have any necessary additional equipment. Do not exceed any Weight Ratings and follow all instructions in your *Owner's Manual*. The maximum you can tow depends on base curb weight plus the total weight of any cargo, occupants, and added vehicle equipment. "Added vehicle equipment" includes additional standard/optional equipment and accessories added by the manufacturer, dealers, and/or vehicle owners. The only way to be certain of your vehicle's exact curb weight is to weigh your vehicle without passengers or cargo. [Calculated with the new SAE J2807 method.] See *Owner's Manual* for limitations. 6. Nitto is a registered trademark of Nitto Tire U.S.A. Inc. 7. Terra Grappler is a registered trademark of Toyo Tire & Rubber Co., Ltd. 8. FOX is a registered trademark of FOX Factory, Inc. 9. JBL® is a registered trademark of Harman International Industries, Inc. 10. SofTex® is a registered trademark of Toyota Motor Sales, U.S.A., Inc. 11. Cargo and load capacity limited by weight and distribution. Always properly secure cargo and cargo area. 12. Connected Services depend on factors outside Toyota's control, including an operative telematics device, a cellular connection, GPS signal and the availability of a compatible wireless network, without which system functionality and availability may be limited or precluded, including access to response center and emergency support. Service may vary by vehicle and region. Apps and services subject to change at any time without notice. Requires app download/registration and subscription after trial (if applicable). Terms of Use apply. Data usage and charges may apply. See usage precautions and service limitations in *Owner's Manual* and <https://www.toyota.com/connected-services/> for additional limitations and details. To learn about Toyota's Connected Services data collection, use, sharing and retention practices, please visit <https://www.toyota.com/privacyvts/>. All trials begin on the original date of purchase or lease of a new vehicle, with the exception of Wi-Fi for which the trial begins at the time of activation. Paid subscription required after trial in order to continue accessing the respective services. Terms of Use apply. 13. Toyota app requires an active Remote Connect trial or subscription. 14. Apple and the Apple logo are trademarks of Apple Inc., registered in the U.S. and other countries. 15. Android is a trademark of Google LLC. 16. Use only if aware of circumstances surrounding vehicle and it is legal and safe to do so (e.g., do not remotely start engine if vehicle is in an enclosed space or vehicle is occupied by a child). Toyota Remote Connect depends on factors outside of Toyota's control, including an operative telematics device, a cellular connection, GPS signal, and the availability of a compatible wireless network, without which system functionality and availability may be limited or precluded. Service may vary by vehicle and region. Registration and Toyota app download required. Subscription required after trial. Terms of Use apply. Data charges may apply. Remote start/stop not available on manual transmission-equipped vehicles. Services subject to change at any time without notice. See usage precautions and service limitations in *Toyota Owner's Manual* and at <https://www.toyota.com/connected-services/> for additional details. To learn about Toyota's Connected Services data collection, use, sharing and retention practices, please visit <https://www.toyota.com/privacyvts/>. The Toyota Remote Connect trial period is at no extra cost and begins on the original date of purchase or lease of a new vehicle. Paid subscription required after trial to access the service. Terms of use apply. 17. Safety Connect® depends on factors outside of Toyota's control, including an operative telematics device, a cellular connection, GPS signal, and the availability of a compatible wireless network, without which system functionality and availability may be limited or precluded, including access to response center and emergency support. Stolen vehicle police report required to use Stolen Vehicle Locator. Some features may require the Toyota app. Registration required. Subscription required after trial. Service subject to change at any time without notice. Terms of Use apply. Data charges may apply. Service may vary by vehicle and region. See usage precautions and service limitations in *Owner's Manual* and at [toyota.com/connected-services/](https://www.toyota.com/connected-services/) for additional details. To learn about Toyota's Connected Services data collection, use, sharing and retention practices, please visit <https://www.toyota.com/privacyvts/>. The Safety Connect® trial period is at no extra cost and begins on the original date of purchase or lease of a new vehicle. After the trial period expires, enrollment in paid subscription is required to access the service. 18. Requires adequate cellular coverage and GPS signal strength. May not work in all areas. Service may vary by vehicle and region. See Toyota Dealer for details and exclusions. 19. Building and/or parking structures may limit system effectiveness. Stolen vehicle police report required to use Stolen Vehicle Locator. For additional assistance contact the Toyota Customer Experience Center at 1-800-331-4331. 20. Information provided is based on the last time data was collected from the vehicle and is not real-time data. Service Connect depends on factors outside of Toyota's control, including an operative telematics device, a cellular connection, GPS signal, and the availability of a compatible wireless network, without which system functionality and availability may be limited or precluded. Service may vary by vehicle and region. Registration required. Subscription required after trial. Service subject to change at any time without notice. Terms of Use apply. Data charges may apply. See usage precautions and service limitations in *Owner's Manual* and at [toyota.com/connected-services/](https://www.toyota.com/connected-services/) for additional details. To learn about Toyota's Connected Services data collection, use, sharing and retention practices, please visit <https://www.toyota.com/privacyvts/>. The Service Connect trial period is at no extra cost and begins on the original date of purchase or lease of a new vehicle. Subscription required after trial. Service Connect renewal will be included when Safety Connect®, Remote Connect or Destination Assist connected service renewal is selected. Service Connect is not renewable as a stand-alone service. 21. Eligible vehicle and wireless service required. Wi-Fi Connect depends on factors outside of Toyota's control, including an operative telematics device, a cellular connection, GPS signal, and the availability of a compatible wireless network, without which system functionality and availability may be limited or precluded. Wi-Fi Connect coverage and service not available everywhere. Valid in the contiguous U.S. and Alaska. Do not drive distracted. Go to att.com/toyota for terms and conditions. Data usage and charges apply. Up to 5 devices can be supported using in-vehicle connectivity. Apps and services subject to change at any time without notice. The Wi-Fi Connect trial begins at the time of activation and expires when 2GB of data is used or when the 3-month period ends. Subscription required after trial. Terms and conditions apply. 22. Dynamic Navigation depends on factors outside of Toyota's control, including an operative telematics device, a cellular connection, GPS signal, and the availability of a compatible wireless network, without which system functionality and availability may be limited or precluded. Services not available in every city or roadway. Use common sense when relying on information provided. Service may vary by vehicle and region. Registration is required. Subscription required after trial. Terms of Use apply. Data charges may apply. See *Owner's Manual* and <https://www.toyota.com/connected-services/> for additional limitations and details. To learn about Toyota's Connected Services data collection, use, sharing and retention practices, please visit <https://www.toyota.com/privacyvts/>. The Dynamic Navigation trial period is at no extra cost and begins on the original date of purchase or lease of a new vehicle. Paid subscription required after trial to access the service. 23. Destination Assist depends on factors outside of Toyota's control, including an operative telematics device, a cellular connection, GPS signal, and the availability of a compatible wireless network, without which system functionality and availability may be limited or precluded. Use common sense when relying on this information. Service may vary by vehicle and region. Registration required. Subscription required after trial. Services subject to change at any time without notice. Terms of Use apply. Data charges may apply. See *Owner's Manual* and [toyota.com/connected-services/](https://www.toyota.com/connected-services/) for additional limitations and details. To learn about Toyota's Connected Services data collection, use, sharing and retention practices, please visit <https://www.toyota.com/privacyvts/>. The Destination Assist trial period is at no extra cost and begins on the original date of purchase or lease of a new vehicle. Paid subscription required after trial to access the service. 24. Not all smartwatches are compatible with Remote Connect: Samsung Gear, Fitbit, Garmin are not compatible. 25. Amazon, Alexa and all related marks are trademarks of Amazon.com, Inc. or its affiliates. Certain functions require adequate signal strength and/or smartphone technology/connectivity. Not all Amazon Alexa functionality is available for in-vehicle use. See applicable app for details. Download of the Toyota app and Toyota+Alexa app are both required to begin in-vehicle use of Alexa. Data charges may apply for certain functions. Apps and services subject to change at any time without notice. To learn more, go to <https://www.toyota.com/audio-multimedia>. To learn more about Toyota's data collection, use, sharing and retention practices, please visit <https://www.toyota.com/privacyvts/>. 26. Google is a trademark of Google LLC. 27. Apps and services are subject to change at any time without notice. Data charges may apply. Apple CarPlay® functionality requires a compatible iPhone® connected with an approved data cable into the USB media port. Apple CarPlay® is a registered trademark of Apple Inc. 28. iPhone® is a registered trademark of Apple Inc. All rights reserved. 29. Vehicle user interface is a product of Google and its terms and privacy statement apply. To use Android Auto on your audio display, you'll need an Android Auto compatible vehicle and Android phone. For phone compatibility visit: <https://www.android.com/autof/>. Requires compatible smartphone connected with an approved data cable into the USB media port, and data plan rates apply. Apps and services vary by phone carrier and are subject to change at any time without notice. Android, Android Auto and Waze are trademarks of Google. 30. Trial length and service availability may vary by model, model year or trim. Service will automatically stop at the end of your trial subscription period unless you decide to continue service. If you do not wish to enjoy your trial, you can cancel by calling the number below. All SiriusXM services require a subscription, each sold separately by SiriusXM after the trial period. **Service subject to the SiriusXM Customer Agreement and Privacy Policy; visit www.siriusxm.com to see complete terms and how to cancel which includes calling 1-866-635-2349.** Some services and features are subject to device capabilities and location availability. All fees, content and features are subject to change. SiriusXM, Pandora and all related logos are trademarks of Sirius XM Radio Inc. and its respective subsidiaries. 31. Toyota Safety Sense™ effectiveness is dependent on many factors including road, weather and vehicle conditions. Drivers are responsible for their own safe driving. Always pay attention to your surroundings and drive safely. See *Owner's Manual* for additional limitations and details. 32. The Pre-Collision System (PCS) with Pedestrian Detection (PD) is designed to determine if impact is imminent and help reduce impact speed and damage in certain frontal collisions involving a vehicle or a pedestrian. PCS w/PD is not a substitute for safe and attentive driving. System effectiveness depends on many factors, such as speed, size and position of pedestrian and weather, light and road conditions. See *Owner's Manual* for additional limitations and details. 33. Dynamic Radar Cruise Control (DRCC) is designed to assist the driver and is not a substitute for safe and attentive driving practices. System effectiveness is dependent on many factors including road, weather and traffic conditions. Vehicles with manual transmission have regular DRCC. See *Owner's Manual* for additional limitations and details. 34. Lane Departure Alert is designed to read visible lane markers under certain conditions, and provide visual and audible alerts when lane departure is detected. It is not a collision-avoidance system or a substitute for safe and attentive driving. Effectiveness is dependent on many factors including road, weather and vehicle conditions. See *Owner's Manual* for additional limitations and details. 35. Automatic High Beams operate at speeds above 25 mph. Factors such as a dirty windshield, weather, lighting and terrain limit effectiveness, requiring the driver to manually operate the high beams. See *Owner's Manual* for additional limitations and details. 36. Downhill Assist Control is designed to help driver maintain vehicle control and speed on steep, downhill descents and is not a substitute for safe driving judgment and practices. Factors including speed, grade, surface conditions and driver input can affect the DAC's ability to prevent loss of control. See *Owner's Manual* for additional limitations and details. 37. EPA-estimated 16 city/19 hwy/17 combined mpg for 2022 4Runner. Use for comparison purposes only. Your mileage will vary for many reasons, including your vehicle's condition and how/where you drive. See www.fueleconomy.gov. 38. The backup camera does not provide a comprehensive view of the rear area of the vehicle and you should also look around the vehicle, using mirrors to confirm rearward clearance. Environmental conditions may limit effectiveness and view may become obscured. See *Owner's Manual* for additional limitations and details. 39. The Bluetooth® word mark and logos are registered trademarks owned by Bluetooth SIG, Inc., and any use of such marks by Toyota is under license. A compatible Bluetooth®-enabled phone must first be paired.

DISCLOSURES

Phone performance depends on software, coverage and carrier. **40.** May not be compatible with all mobile phones, MP3/WMA players and like models. **41.** Rated for 12 volts/10 amps. See *Owner's Manual* for additional limitations and details. **42.** Do not exceed 120V. See *Owner's Manual* for additional limitations and details. **43.** Airbag systems are Supplemental Restraint Systems and are designed to inflate only under certain conditions and in certain types of severe collisions. To decrease the risk of injury from an inflating airbag, always wear seatbelts and sit upright in the middle of the seat as far back as possible. Do not put objects in front of an airbag or around the seatback. Do not use a rearward-facing child seat in any front passenger seat. See *Owner's Manual* for additional limitations and details. **44.** HD Radio™ Technology manufactured under license from iBiquity Digital Corporation U.S. and Foreign Patents. HD Radio™ and the HD, HD Radio, and "Arc" logos are proprietary trademarks of iBiquity Digital Corp. **45.** This floor mat/floor liner was designed specifically for use in your model and model year vehicle and SHOULD NOT be used in any other vehicle. To avoid potential interference with pedal operation, each mat/liner must be secured with its fasteners. Do not install a floor mat/floor liner on top of an existing floor mat/floor liner. **46.** Do not rely exclusively on the Blind Spot Monitor. Always look over your shoulder and use your turn signal. There are limitations to the function, detection and range of the monitor. See *Owner's Manual* for additional limitations and details. **47.** Do not rely exclusively on the Rear Cross-Traffic Alert system. Always look over your shoulder and use your mirrors to confirm rear clearance. There are limitations to the function, detection and range of the system. See *Owner's Manual* for additional limitations and details. **48.** The Panoramic View Monitor does not provide a comprehensive view of the area surrounding the vehicle. You should also look around outside your vehicle and use your mirrors to confirm surrounding clearance. Environmental conditions may limit effectiveness and view may become obscured. See *Owner's Manual* for additional limitations and details. **49.** Torsen® is a registered trademark of Zexel Torsen, Inc. **50.** Front and rear parking assist sonar is designed to warn drivers of potential front and rear collisions at speeds of 6 mph or less. Certain vehicle and environmental factors, including an object's shape and composition, may affect the ability of the front and rear parking assist sonar to detect it. Always look around outside the vehicle and use mirrors to confirm clearance. See *Owner's Manual* for additional limitations and details. **51.** Extra-cost color. **52.** Toyota strives to build vehicles to match customer interest and thus they typically are built with popular options and option packages. Not all options/packages are available separately and some may not be available in all regions of the country. See toyota.com for information about options/packages commonly available in your area. If you would prefer a vehicle without any or with different options, contact your dealer to check for current availability or the possibility of placing a special order. Color(s) depicted may vary based on multiple factors, including ambient lighting and the format in which it is being viewed (e.g., computer, mobile device or print). **53.** HomeLink® and the HomeLink® house icon are registered trademarks of Genex Corporation. **54.** Advance voice recognition capabilities vary by head unit. **55.** Dynamic Voice Recognition capabilities vary by head unit. **56.** Vehicle Stability Control is an electronic system designed to help the driver maintain vehicle control under adverse conditions. It is not a substitute for safe and attentive driving practices. Factors including speed, road conditions, weather and driver steering input can all affect whether VSC will be effective in preventing a loss of control. See *Owner's Manual* for additional limitations and details. **57.** Brake Assist is designed to help the driver take advantage of ABS and is not a substitute for safe driving practices. Braking effectiveness also depends on proper vehicle maintenance, tire and road conditions. See *Owner's Manual* for additional limitations and details. **58.** Smart Stop Technology® operates only in the event of certain contemporaneous brake and accelerator pedal applications. When engaged, the system will reduce power to help the brakes bring the vehicle to a stop. Factors including speed, road conditions and driver input can all impact stopping distance. Smart Stop Technology® is not a substitute for safe and attentive driving and does not guarantee instant stopping. See *Owner's Manual* for additional limitations and details. **59.** Active front headrests can help reduce the extent of whiplash in certain types of rear-end collisions. **60.** The Tire Pressure Monitor System alerts the driver when tire pressure is critically low. For optimal tire wear and performance, tire pressure should be checked regularly with a gauge; do not rely solely on the monitor system. See *Owner's Manual* for additional limitations and details. **61.** The engine immobilizer is a state-of-the-art anti-theft system that is initiated when you insert your key into the ignition switch or bring a Smart Key fob into the vehicle. The engine will only start if the code in the transponder chip inside the key/fob matches the code in the vehicle's immobilizer. The transponder chip is embedded in the key/fob and can be costly to replace. If you lose a key or fob, your Toyota dealer can help or go to www.aloa.org to find a qualified locksmith in your area who can perform high-security key service.

Toyota strives to build vehicles to match customer interest and thus they typically are built with popular options and option packages. Not all options/packages are available separately and some may not be available in all regions of the country. See toyota.com for information about options/packages commonly available in your area. If you would prefer a vehicle without any or with different options, contact your dealer to check for current availability or the possibility of placing a special order.

Color(s) depicted may vary based on multiple factors, including ambient lighting and the format in which it is being viewed (e.g., computer, mobile device or print).

Some vehicles are shown with available equipment. Seatbelts should be worn at all times. For details on vehicle specifications, standard features and available equipment in your area, contact your Toyota dealer. A vehicle with particular equipment may not be available at the dealership. Ask your Toyota dealer to help locate a specifically equipped vehicle.

All information presented herein is based on data available at the time of posting, is subject to change without notice and pertains specifically to mainland U.S.A. vehicles only. Vehicles shown may be prototypes, shown using visual effects and/or shown with options. Actual models may vary.



Mobility

For Toyota Mobility program details, go to www.toyota.com/mobility or call the Toyota Brand Engagement Center at 1-800-331-4331